

Model JYB-KW

Ultra Sanitary Process Pressure Transmitter



DESCRIPTION

Model JYB-KG is a cost ultra sanitary pressure transmitter used in the clean place such as foodstuff or medicament. Each unit is constructed of welded stainless steel for durability in dry rugged environments. Both gas and liquid pressure overloads of up to 50% over capacity are safely accepted. The transmitter uses our proprietary current output with wide temperature compensation. This design references the primary pressure sensing diaphragm to the atmosphere, and provides a stable zero regardless of the transducer environment.

PRESSURE MEASUREMENT

Supply Voltage	12 to 30VDC
Operating Range	Any zero based full scale from 2psi(10kPa) to 500psi (35bar)
Over Pressure	Two times for the full scale
Output Signal	Current two-wire 4mA to 20mA (Load < 500Ω); Voltage from 0-5VDC(Load > 1kΩ); Rs-232/485
Pressure Media	Fluids compatible with 316 stainless steel and Hastelloy C276 (NACE compatible grades)

PERFORMANCE SPECIFICATIONS

Accuracy	±0.25%, ±0.5% (25°C)
Response	<100ms
Long Term Stability	<0.1% FS per year
Temperature Range	-20 to 85°C
Temperature Effects	Max 1.0% FS typical over 0 to 60°C Max 1.5% FS typical over -20 to 85°C

PHYSICAL CONNECTION

Pressure Connection	G1/4 male with screw-in adaptor or M20x1.5 male screw-in adaptor
Electrical Connection	Connect terminal (IP65)

FEATURES

- ultra sanitary pressure transmitter
- 0 - 10 psig/a to 500 psig/a range
- 500 ms pressure response time
- Accuracy to 0.25 % or 0.5%
- LED or LCD display
- CE certifications

ORDERING CODES

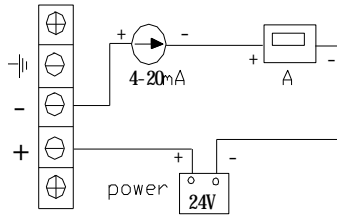
JYB-KW	JYB-KBW is a safety model for Exib II CT6	
I1	Current two-wire 4 ma to 20 ma	
V1	Voltage 0 to 5VDC	
W1	RS485	
W2	RS232	
M1	M12×1 Bayonet plug (IP67)	
M2	DIN43650 Plug/Socket (IP65)	
M3	Terminal without display	
M4	Display with finger (only I1)	
M5	Display with LED (only I1)	
M6	Display with LCD (only I1)	
N1	M20x1.5 male screw-in adaptor	
N2	G1/4 male with screw-in adaptor	
N3	Flange (DN25)	
S1	0-2psi	
S2	0-5psi	
S3	0-10psi	
S4	0-20psi	
S5	0-50psi	
S6	0-100psi	
S7	0-200psi	
S8	0-500psi	
B1	Gauge	
B2	Absolute	
A1	±0.25%	
A2	±0.5%	

Model JYB-KW

Ultra Sanitary Process Pressure Transmitter

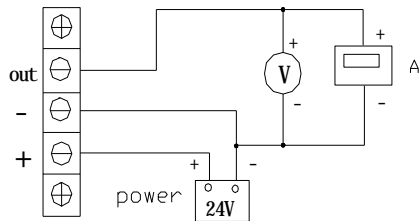
ELECTRICAL CONNECTION

- Current two-wire 4ma to 20mA



two-wires 4-20mA current output

- Voltage three-wire 0v to 5v



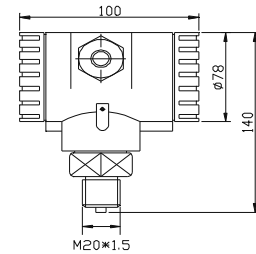
three-wires voltage output

NOTES

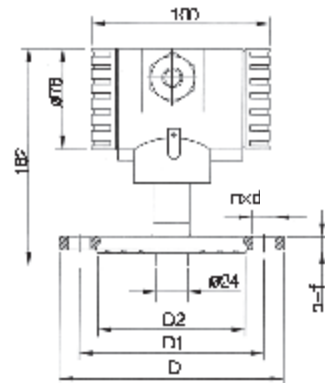
- 1• Because the sensor belongs to the precision component, in order to prevent damages of the product, don't disassemble voluntarily and touch a film slice, please.
- 2• When make a survey of high-pressure, must install buffer equipment in the exit of the connection between the sensor and the medium, which can avoid the momentary pulse high-pressure and the damages of sensors.
- 3• Accuracies stated are expected for best fit straight line for all errors including linearity, hysteresis & non-repeatability thru zero.
- 4• When install the pressure transmitter, must use the spanner from the bottom of the nut to screw tightly, avoid directly turning on the upside.

MOUNTING DIMENSION

- N1 or N2 (IP65)



- N3 (IP65)



Note: $D=100\text{mm}$, $D1=75\text{mm}$, $D2=60\text{mm}$.

$d=12\text{mm}$, $n=4$.

$b=14\text{mm}$, $f=2\text{mm}$.

If you need else dimensions, please explain specification.